


MOOER



Quick Start Guide



PRECAUTIONS	01
LAYOUT	02
CONNECTION	03-05
OTG Function	06

Please read carefully before proceeding

Power Supply

" # \$ % & ' ' ! !
(!

Connections

) * + , ' - . " !
! " " !

Cleaning

" ! / ! %
0

Interference with other electrical devices

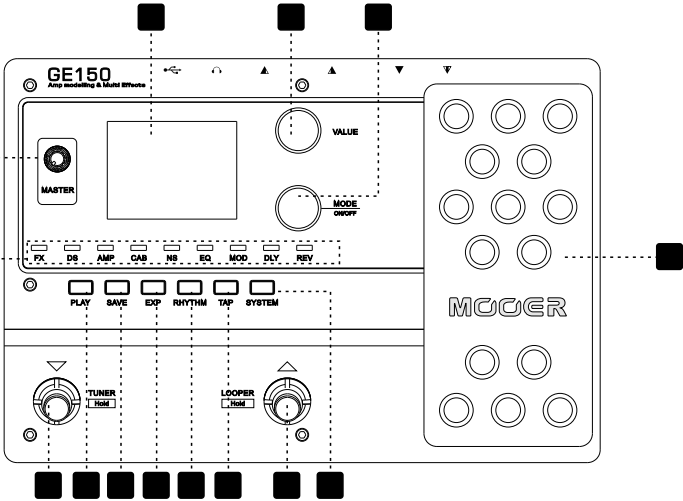
1 ! " / ! 2

Location

! /
3 %
3 4
3 /* !
3 5
3 /*
3 5
3 6 ! "

FCC Certification

! + , 1 2 " -
3 !
3 ! !

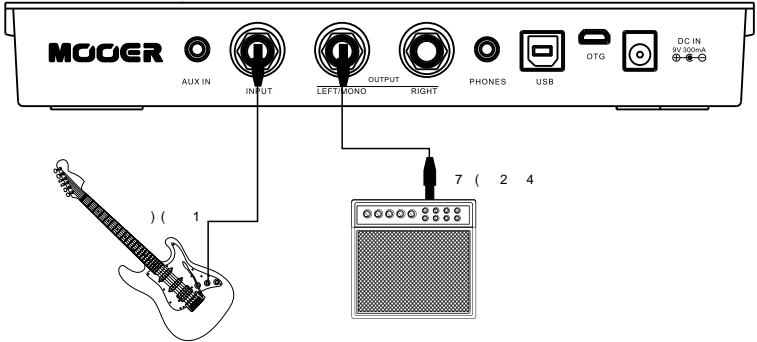


- **Display**
- **VALUE:** (! -
- **MODE:** 2 7 2 !
- **MASTER:** - !) * + , '
- **EFFECT BLOCK**
- **2 FOOTSWITCH:** 8
- (7 * 1
- **PLAY:** *
- **SAVE:** !
- **EXP:** * " /
- **RHYTHM:** 2 7 2 %
- **TAP:** * 4 2
- **3 FOOTSWITCH:** 9
- : 2:2 * 1 9 6 2 . : * 1
- **SYSTEM:** *
- **EXPRESSION PEDAL:** " !
-) * ; "

) +, ' <: 1 = -

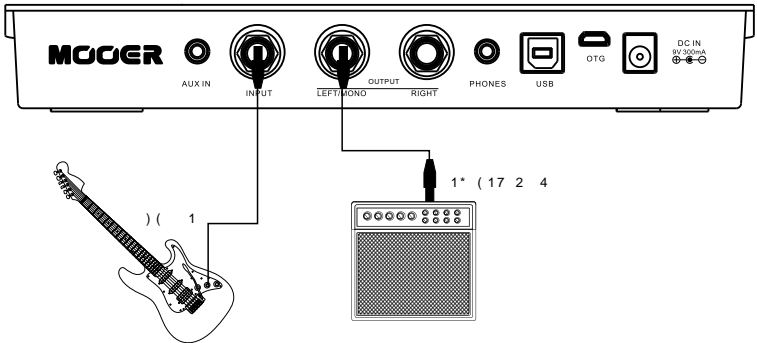
1. Connect to the input of your amplifier

Toggle the AMP and CAB modules off.



2. Connect to power amp

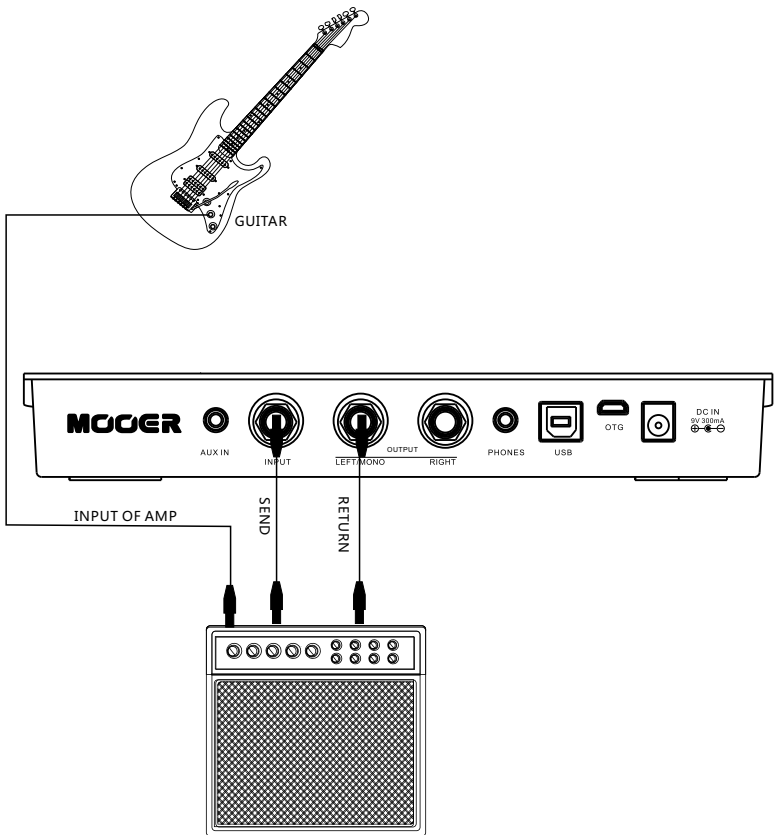
>



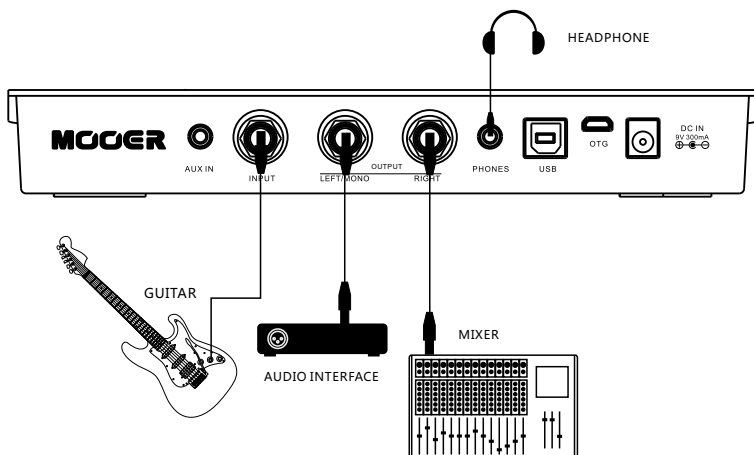
3. Connect to FX LOOP

) * + , ' " "

" /

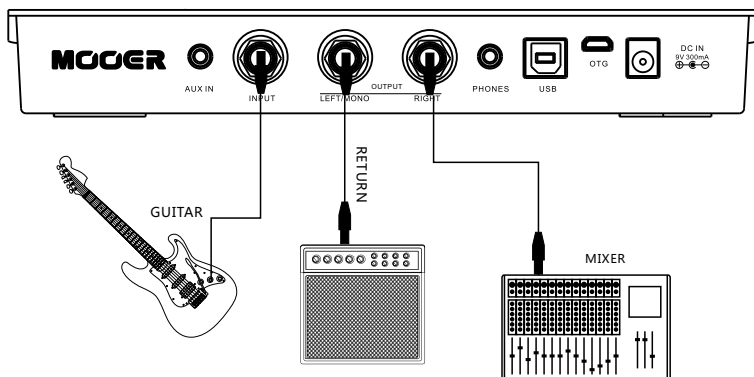


4. HOME STUDIO



5. LIVE SHOW

: ? >
1 ? >

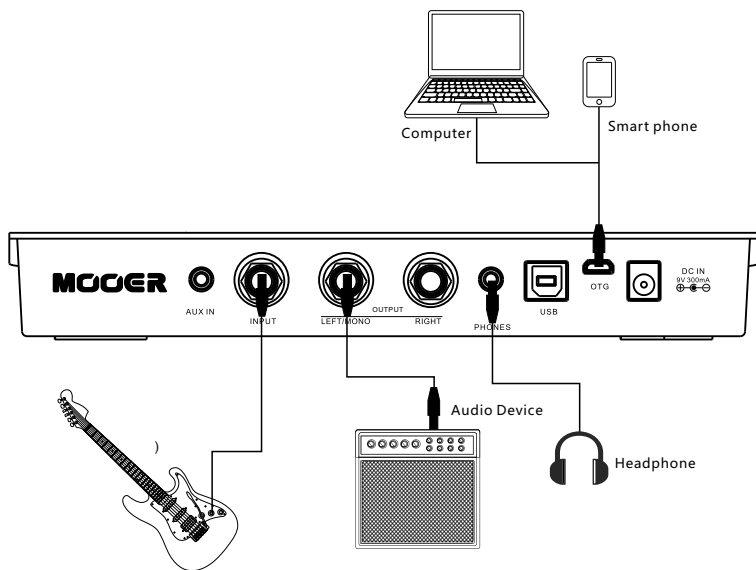


) +, ' " (2) "
) * +, ' * ! . (2) "
! . (@ !

Notice: Please ensure your portable device has OTG function. The OTG port of Ge150is Micro-USB type.

OTG Setting

* 06 * 4 0 2) - !) 2



Notice: For WIN DAW, ASIO driver (ASIO4ALL) need to be installed for direct recording.

MOOER
www.moeraudio.com

SHENZHEN MOOER AUDIO CO. LTD
6F, Unit D, Jinghang Building, Liuxian 3rd Road,
Bao'an 71 District, Shenzhen, China. 518133
MADE IN CHINA